

INSTALLATION PROCEDURE FOR WINEUR

Summary

INSTALLATION PROCEDURE FOR WINEUR	1
System configuration.....	3
Minimal requirements for a local installation	3
Minimal requirements for a server installation	3
Recommandations.....	3
Software configuration.....	3
Installation.....	4
Best practices	10
Network quality.....	10
Anti-virus	10
Microsoft Windows Defender	10
Files indexing.....	10
Shared directories cache	11
First run of WinEUR.....	12

System configuration

Minimal requirements for a local installation

- Processor 32 or 64bits (Intel or AMD), 1Ghz minimum
- 1Go Ram
- 1Go HDD for the software (without data)
- Microsoft Windows Vista, 7, 8 or 8.1

Minimal requirements for a server installation

- Processor 32 or 64bits (Intel or AMD), 1Ghz minimum
- 1Go Ram
- 1Go HDD for the software (without data)
- Microsoft Windows Server 2003, 2008, 2008 R2, 2012 or 2012 R2
- Citrix XenApp or Microsoft Remote Desktop Services (Terminal Server)

Recommandations

If you have an installation with data separated from application, we recommend a **Gigabit local LAN**.

Perform **regularly** a manual or automatic backup, **of your accounting data** in a location which is different from the one containing data.

Software configuration

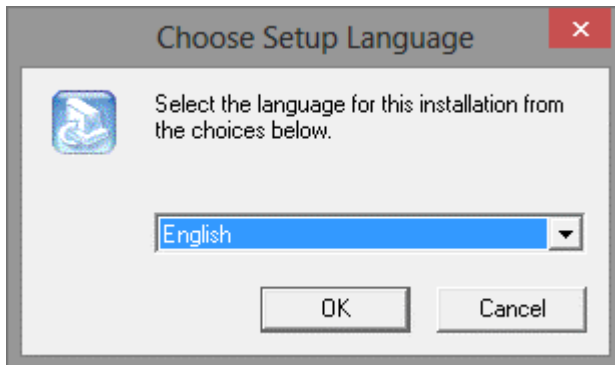
- The software installation of WinEUR (on CD-Rom, received by post or download link received by mail)
- License information :
 - o Serial number
 - o Key

Installation

Insert the WinEUR accounting program installation CD-Rom or double click on the file *SETUP.EXE* downloaded.

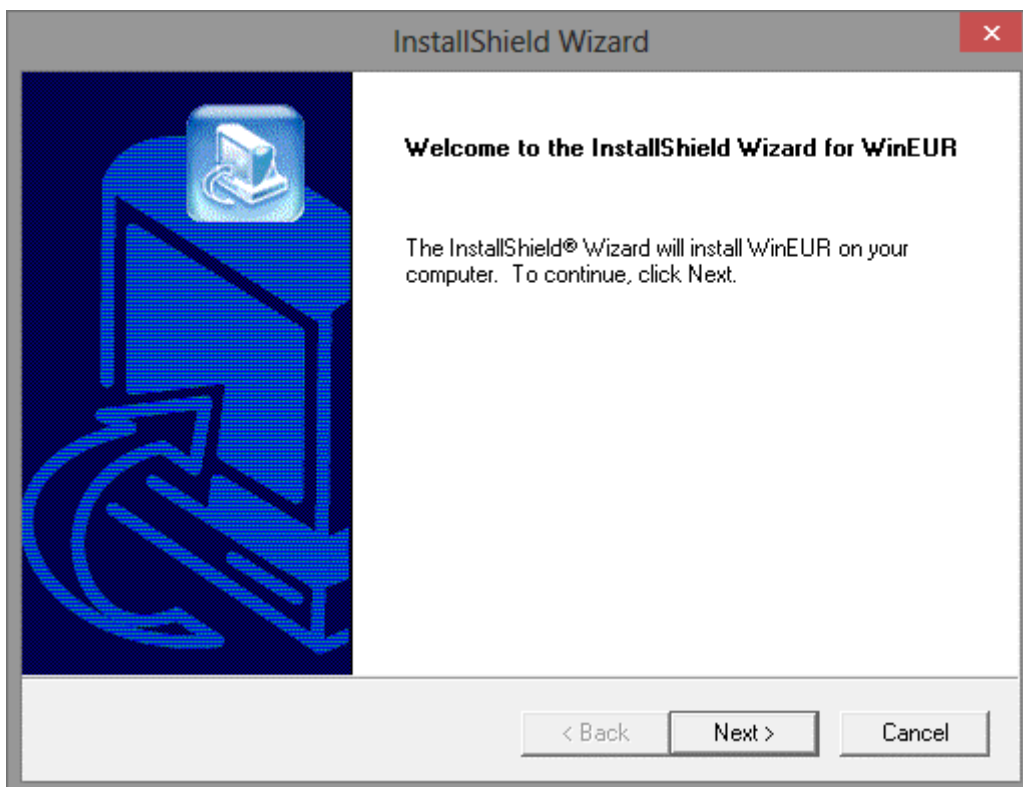
*If the installation does not start automatically, run the *SETUP.EXE* program that is located at the root of the CD-Rom drive.*

The program shows the following screen :

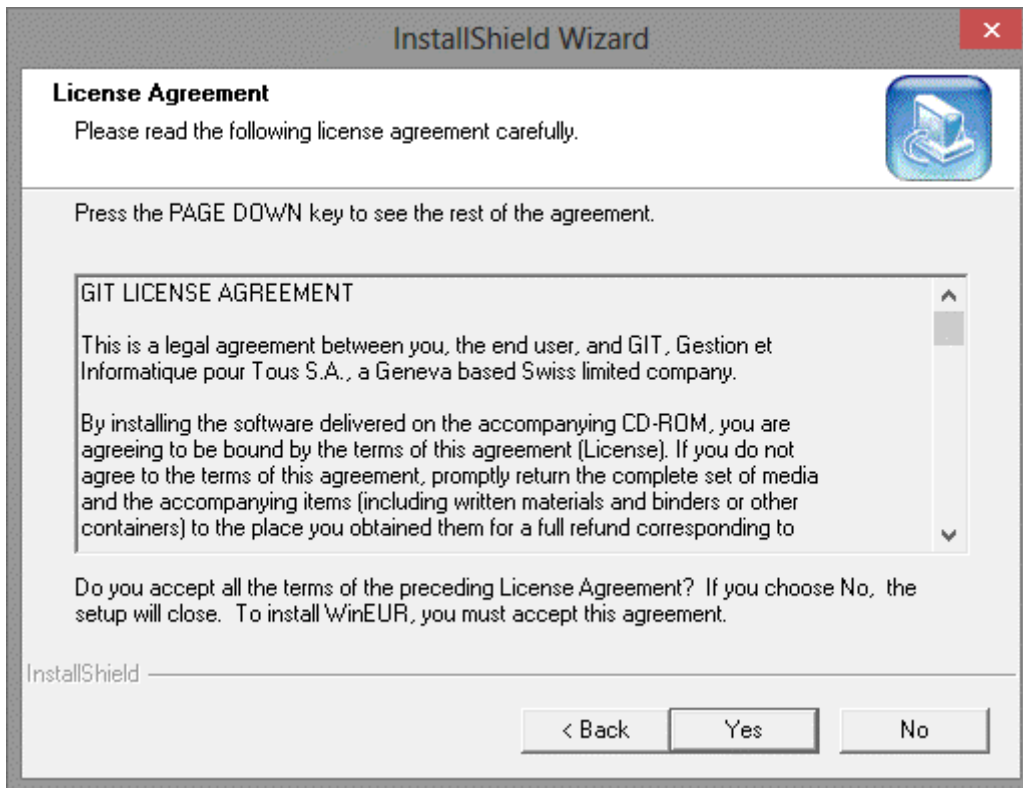


This screen allows you to choose the language of the installation program (The default language is French, to switch to English, select “English”). Your choice will not have any effect on the usage of the program.

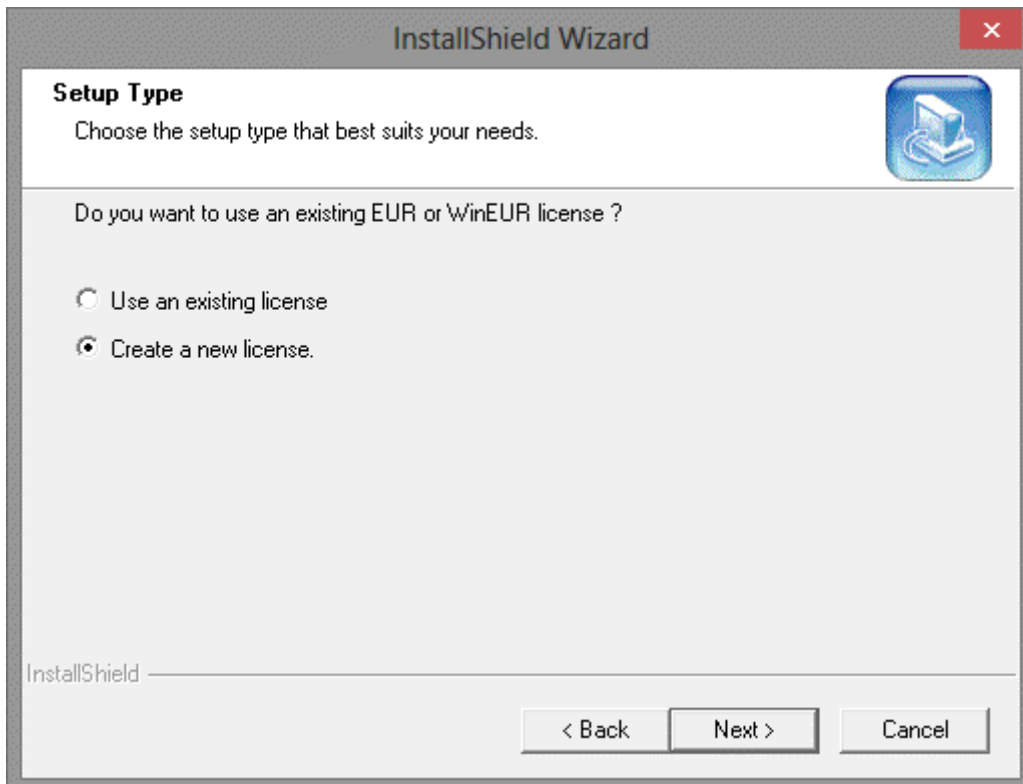
The program will then show the following screen. Click on “Next” to continue the installation or “Cancel” to interrupt the installation.



The usage of the software is subject to certain conditions. Please read the license carefully. If you accept the conditions, click on "Yes".

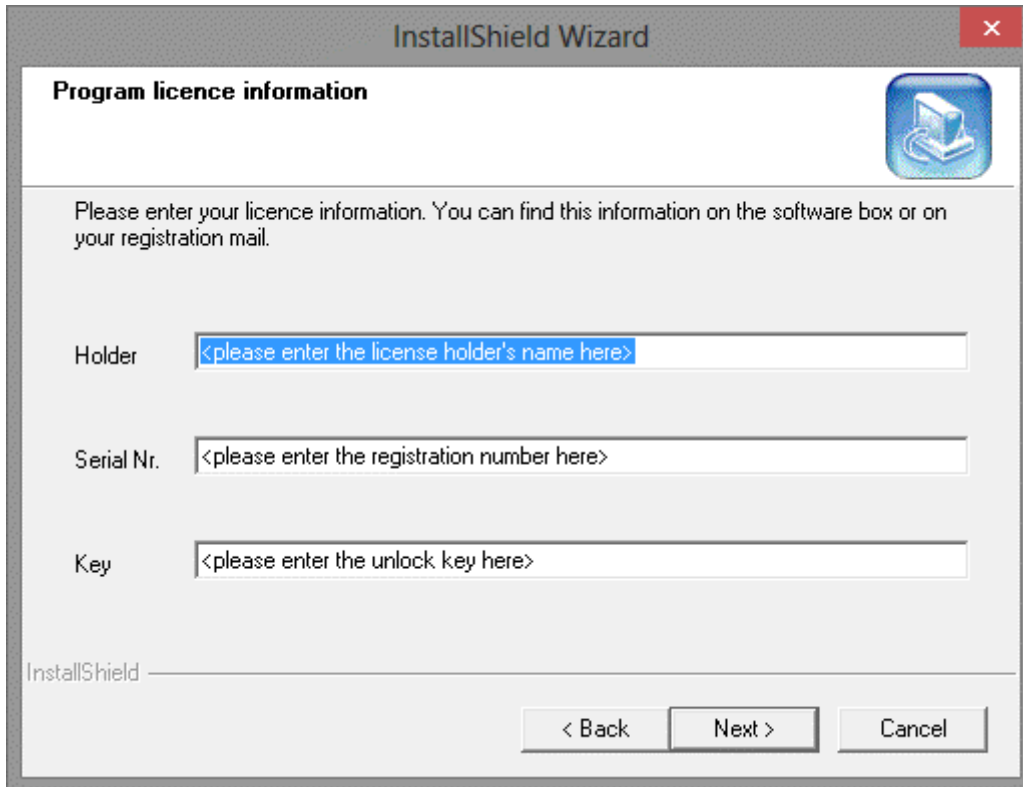


The program will display the following screen :



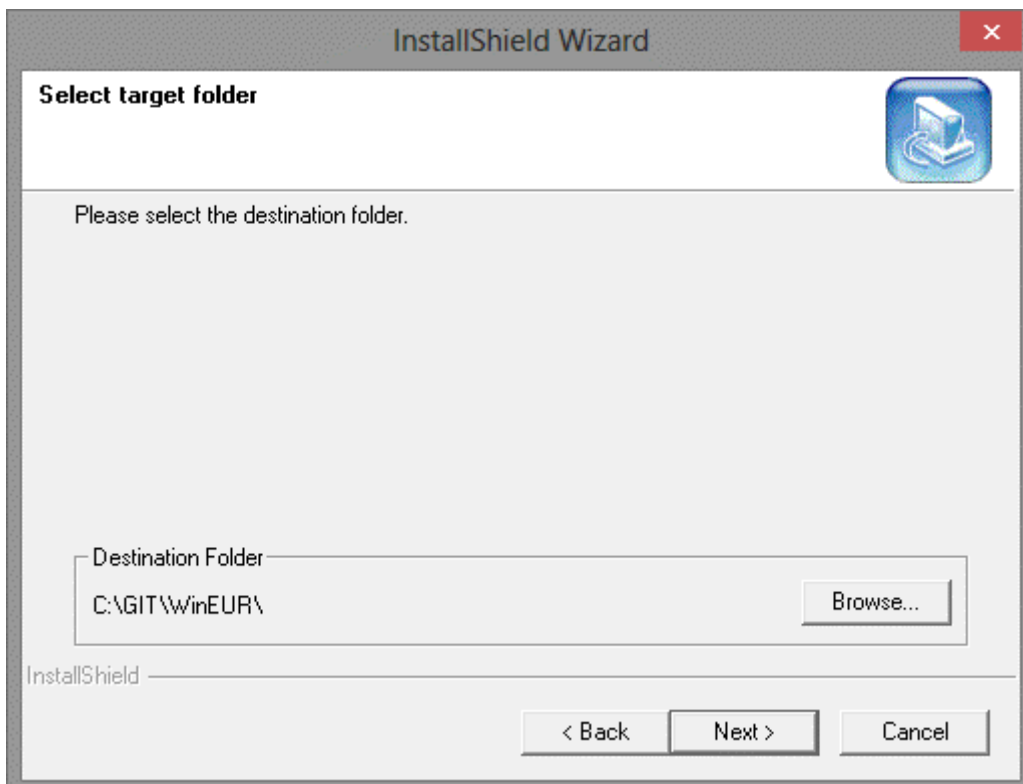
Click on "Create a new license" if this is the first installation of the program. Click on "Next".

The screen with the license information will be displayed :



The screenshot shows the 'InstallShield Wizard' window with the title bar 'InstallShield Wizard' and a close button. The main heading is 'Program licence information'. Below the heading is a blue icon of a computer monitor. The text reads: 'Please enter your licence information. You can find this information on the software box or on your registration mail.' There are three input fields: 'Holder' with the placeholder '<please enter the license holder's name here>', 'Serial Nr.' with the placeholder '<please enter the registration number here>', and 'Key' with the placeholder '<please enter the unlock key here>'. At the bottom, there are three buttons: '< Back', 'Next >', and 'Cancel'. The 'InstallShield' logo is visible in the bottom left corner.

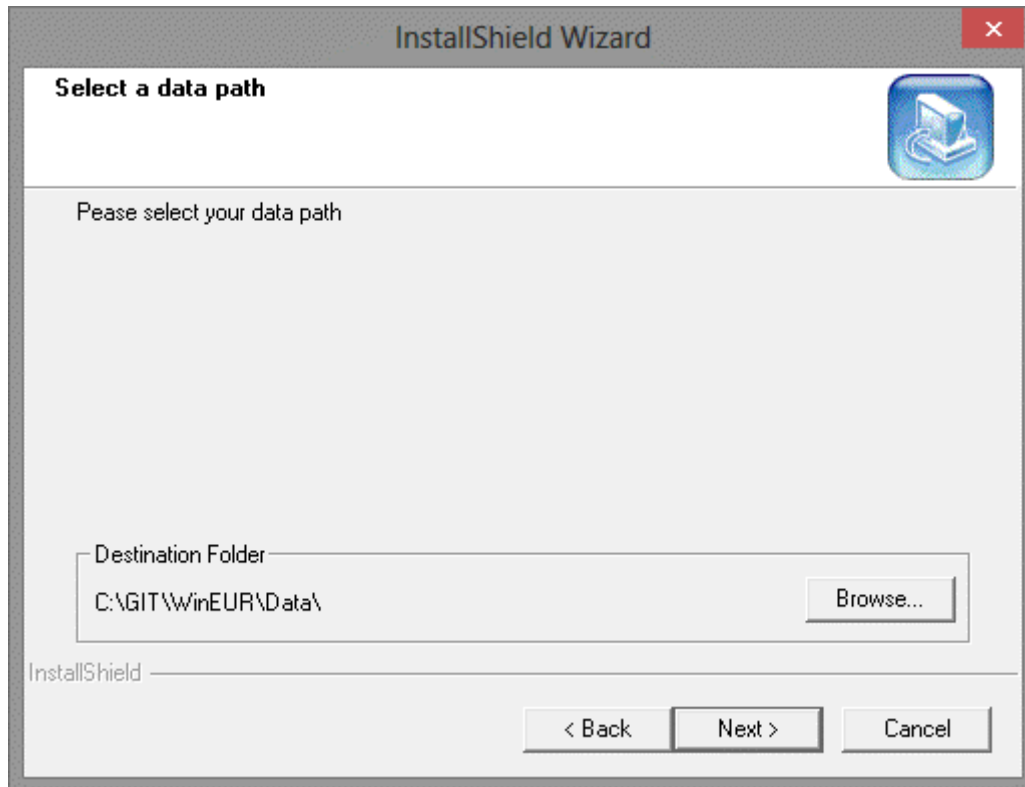
The serial number and the access key must be entered correctly in order to continue the installation.



The screenshot shows the 'InstallShield Wizard' window with the title bar 'InstallShield Wizard' and a close button. The main heading is 'Select target folder'. Below the heading is a blue icon of a computer monitor. The text reads: 'Please select the destination folder.' There is a text box labeled 'Destination Folder' containing the path 'C:\GIT\WinEUR\' and a 'Browse...' button to its right. At the bottom, there are three buttons: '< Back', 'Next >', and 'Cancel'. The 'InstallShield' logo is visible in the bottom left corner.

The program can be installed on a local drive or on a network. To change the default location, click on "Browse".

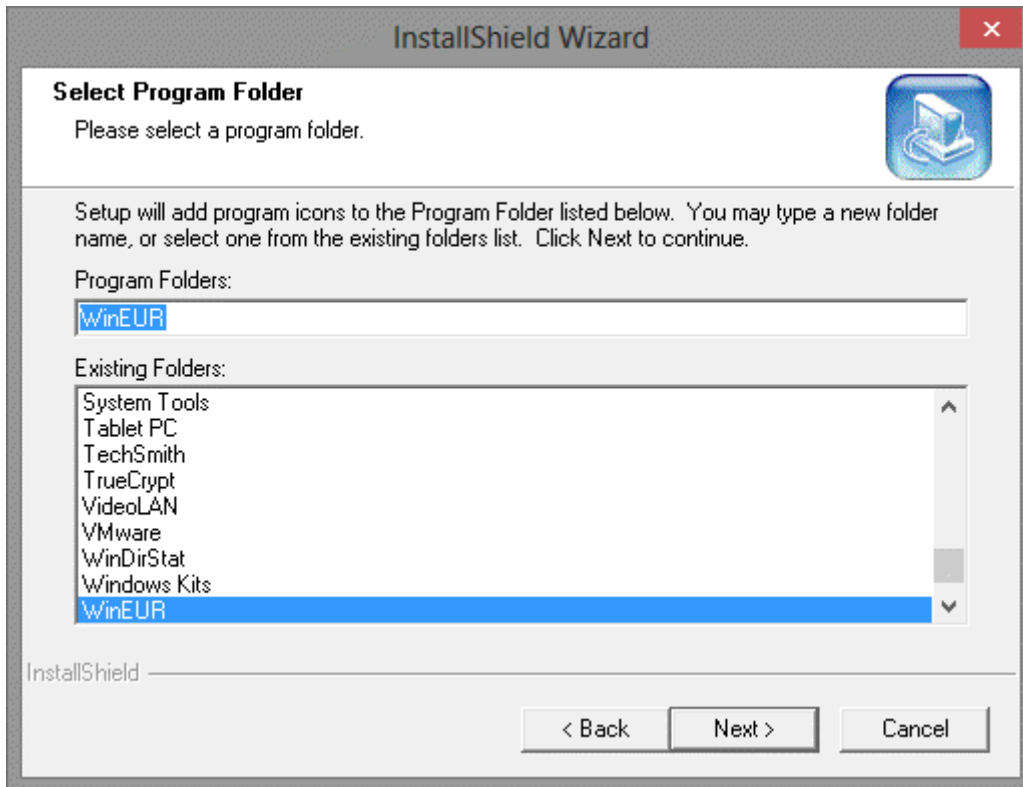
Click on "Next" to display the following screen :



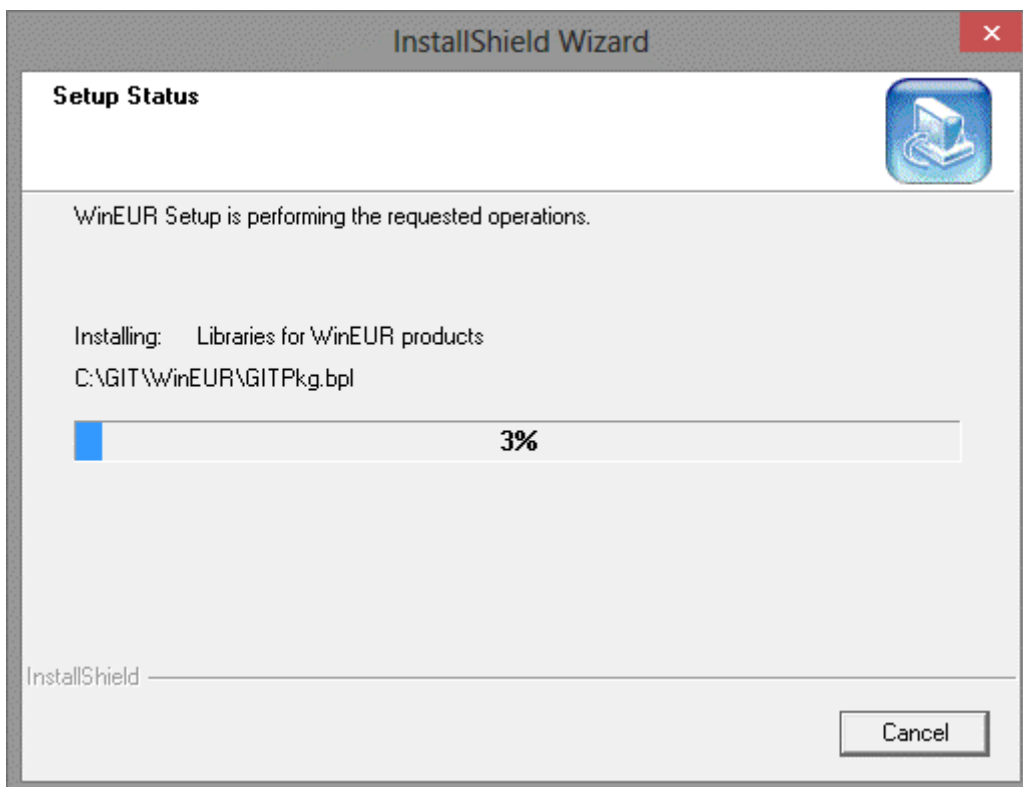
You can change the location of the data files with the "Browse" button.

Remark : In the case of network installation, the programme is running as an administrator. Therefore, network drives are not necessarily mapped. If that is the cas, you must use UNC paths for WinEUR installation.

Click on "Next" :

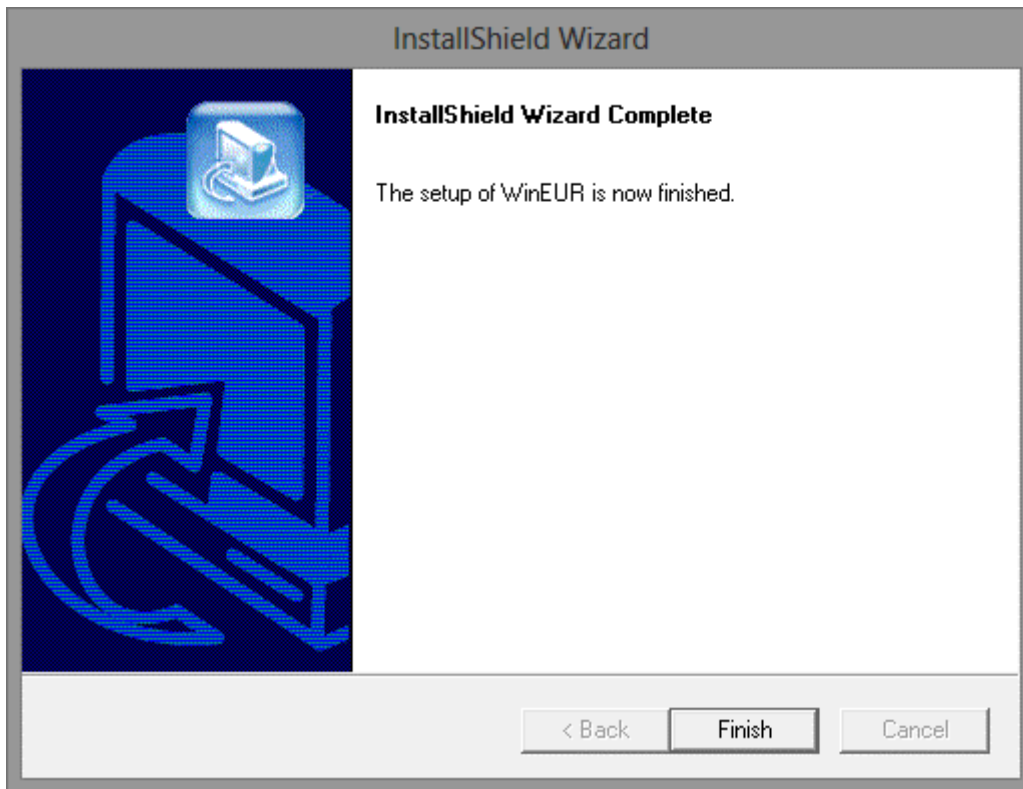


Accept the name and location with "Next".



The program files are now being transferred data to the location that you specified previously. You will see the progression of the installation on the screen.

The following screen will inform you that the installation is finished. You can exit the installation wizard by clicking on the “Finish” button.



A shortcut to the WinEUR Accounting software is created on your desktop and on your start menu.



Best practices

WinEUR program contains three directories :

- **The program** : directory containing WinEUR program executable files
- **Data files** : company accounting data
- **System files** : application system files

These three elements are independent. You can install one of them on a server and the other on a second server or group them on the same location.

In order to use the software in the best conditions, we recommend to check the following issues. Some of them are of course applicable only for some installation types (for example network or local installation). You should consider the following recommendations for all servers and desktops using/storing the WinEUR program and its data.

Network quality

If you access WinEUR data through a network via a shared directory or other, its quality and speed will play an important role in the program use. Too slow or overloaded network will cause slowdowns or even data corruption.

We recommend using WinEUR with a Gigabit LAN and on a Windows file share.

Anti-virus

The software performs many operations with you data. For example, when completing a report, the program will query a lot of data files to get the desired result. Some anti-virus are setup to scan each file access by programs. This practice causes slowdowns or data unavailabilities.

We recommend adding an exclusion in your file real-time protection for all data, system and WinEUR program directories.

Microsoft Windows Defender

With the advent of Microsoft Windows 8 and 8.1, operating systems are automatically delivered with Microsoft Windows Defender anti-virus.

If you are using another anti-virus, you should check that Microsoft Windows Defender is disabled.

As a matter of fact and depending on configurations, it does not automatically disable and this creates conflicts.

Files indexing

Today each operating system includes a file search tool. These search tools operate by indexing each file from your computer as soon as from they change.

WinEUR data is constantly modified by the program. A poorly tuned file indexer can cause processing slowdowns as it will run a new indexing for each data modification.

We recommend to add an exclusion in your file indexer for both data directory and WinEUR system.

Shared directories cache

If you are using WinEUR in a multi-user mode and that your data is stored on a shared directory, we recommend to initially **use a Windows directory**. As a matter of fact, our applications are architected for Microsoft Windows and therefore they are optimized for the use of Windows shares.

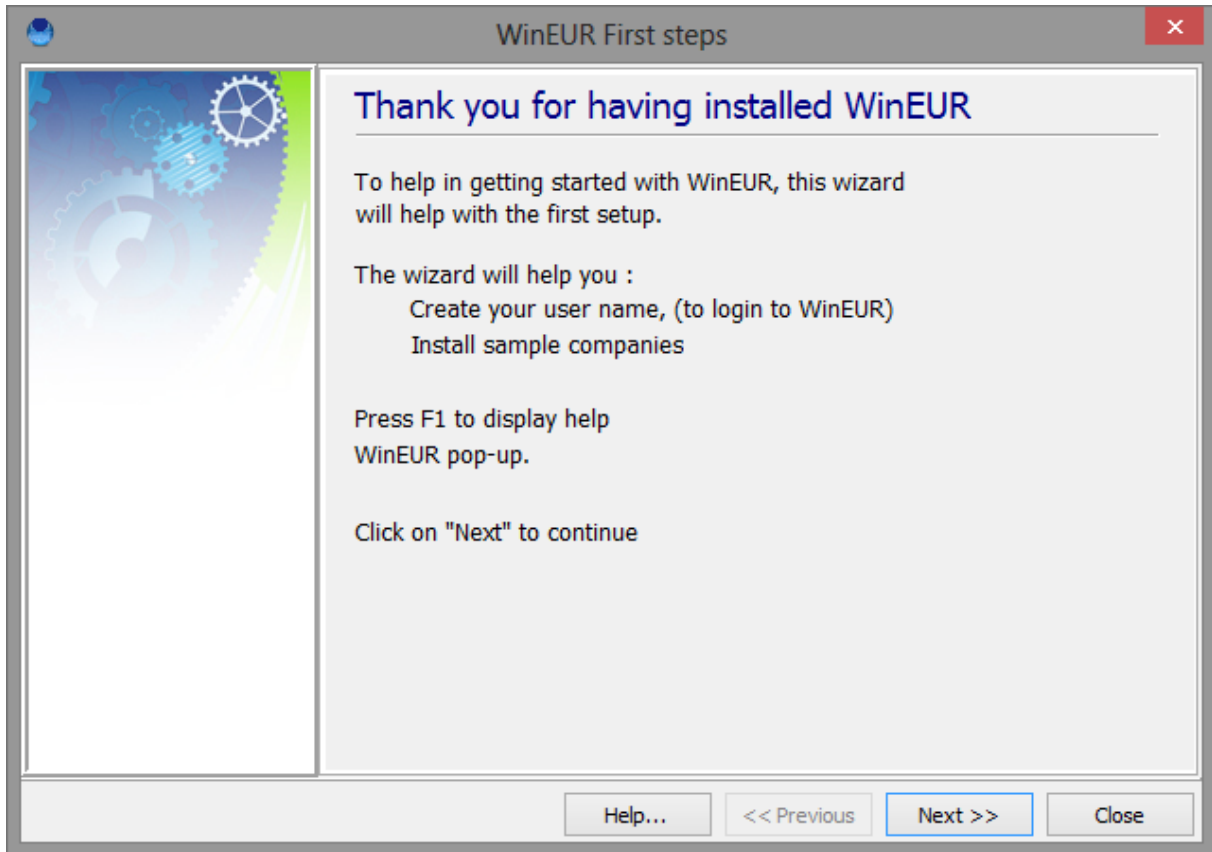
WinEUR data must be available online by the program. Cache management or offline data causes corruptions or even data loss in a multi-user mode.

For example, user A may modify data at the same time than user B. But if user A was using offline data, his modifications would be overwritten by user B during synchronization.

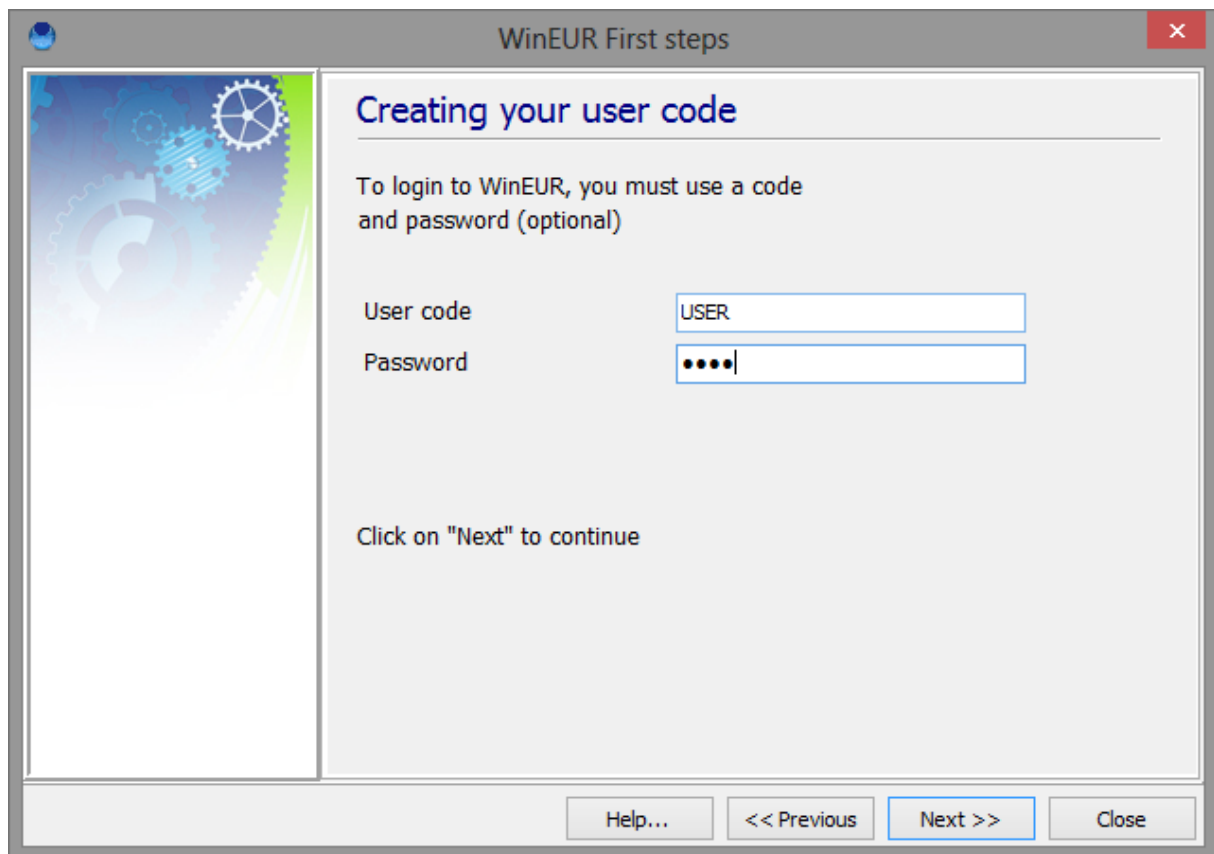
We recommend to disable caching (or offline availability) of shared files for data and WinEUR system directories.

First run of WinEUR

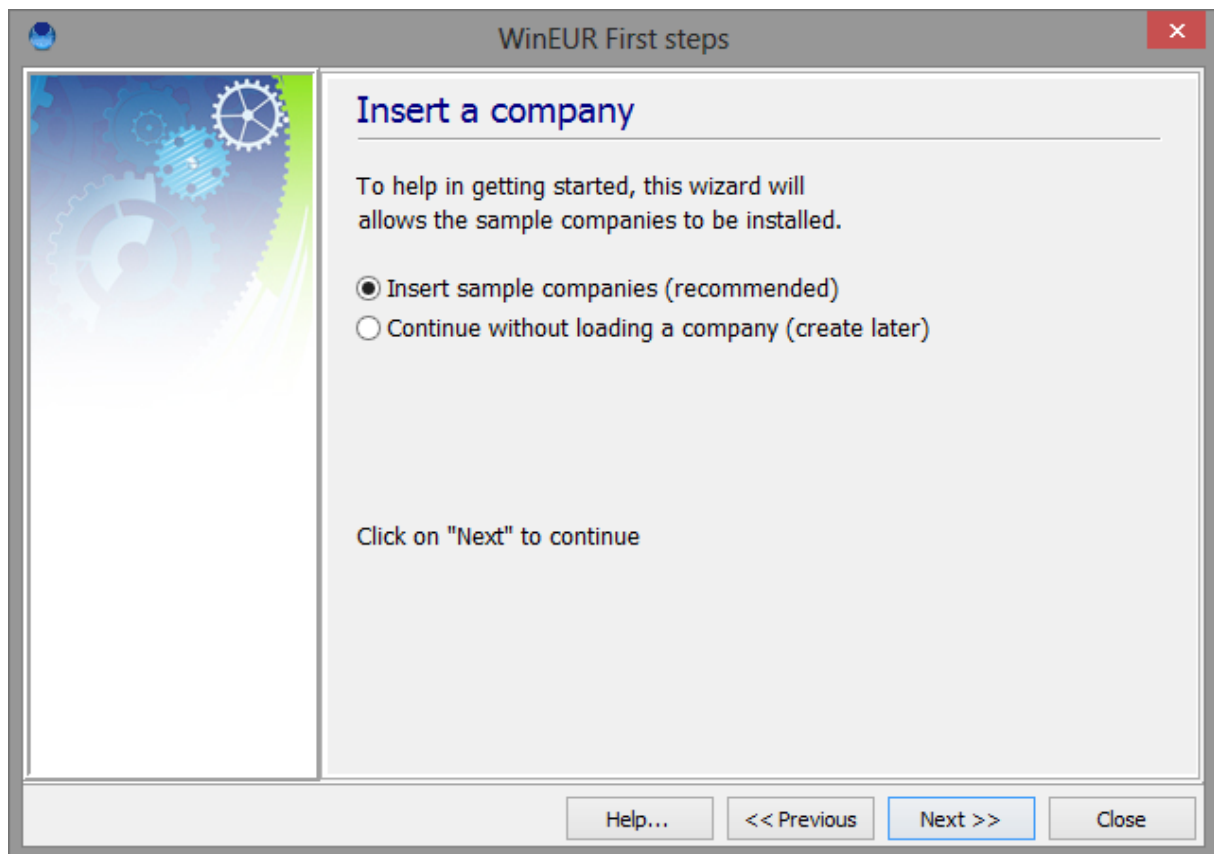
Launch the software to initialize WinEUR.



Click on "Next" to continue.

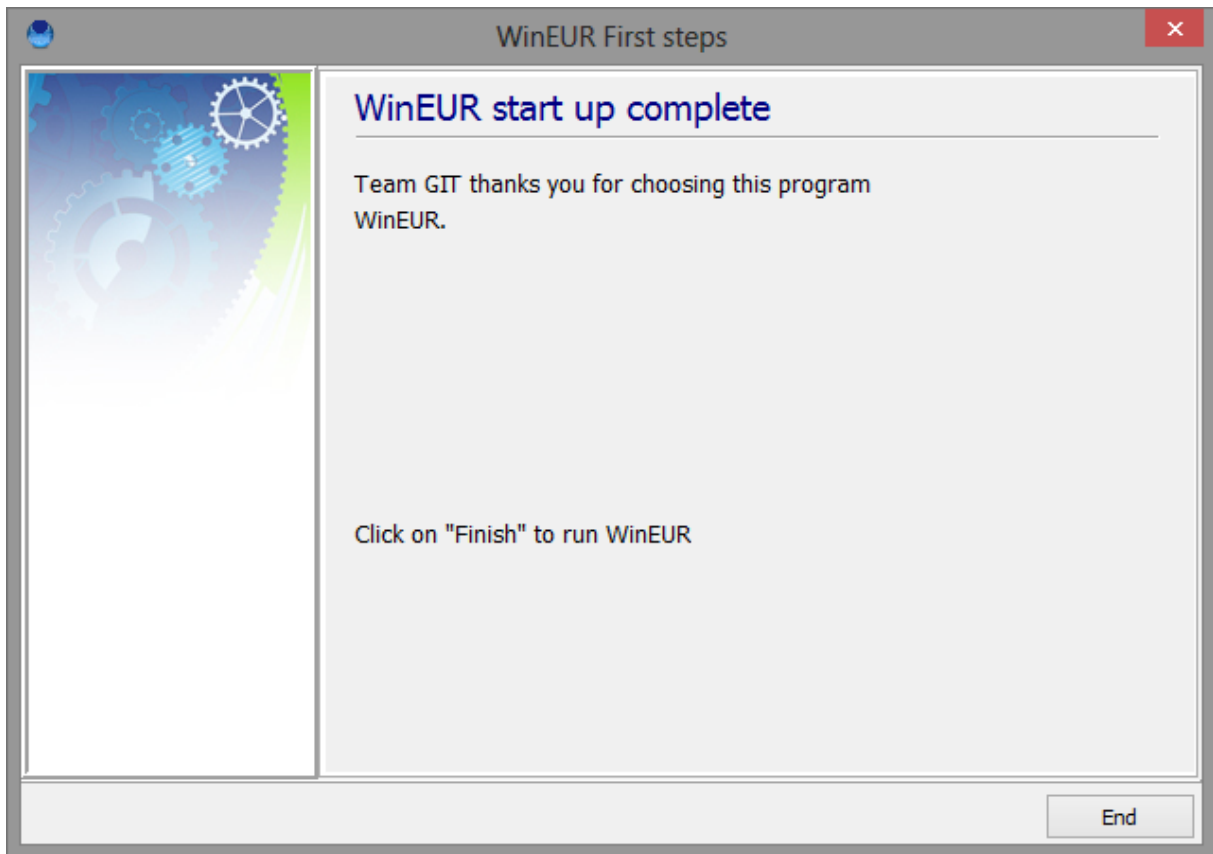


Enter a user name, a password (optional) and click on "Next".



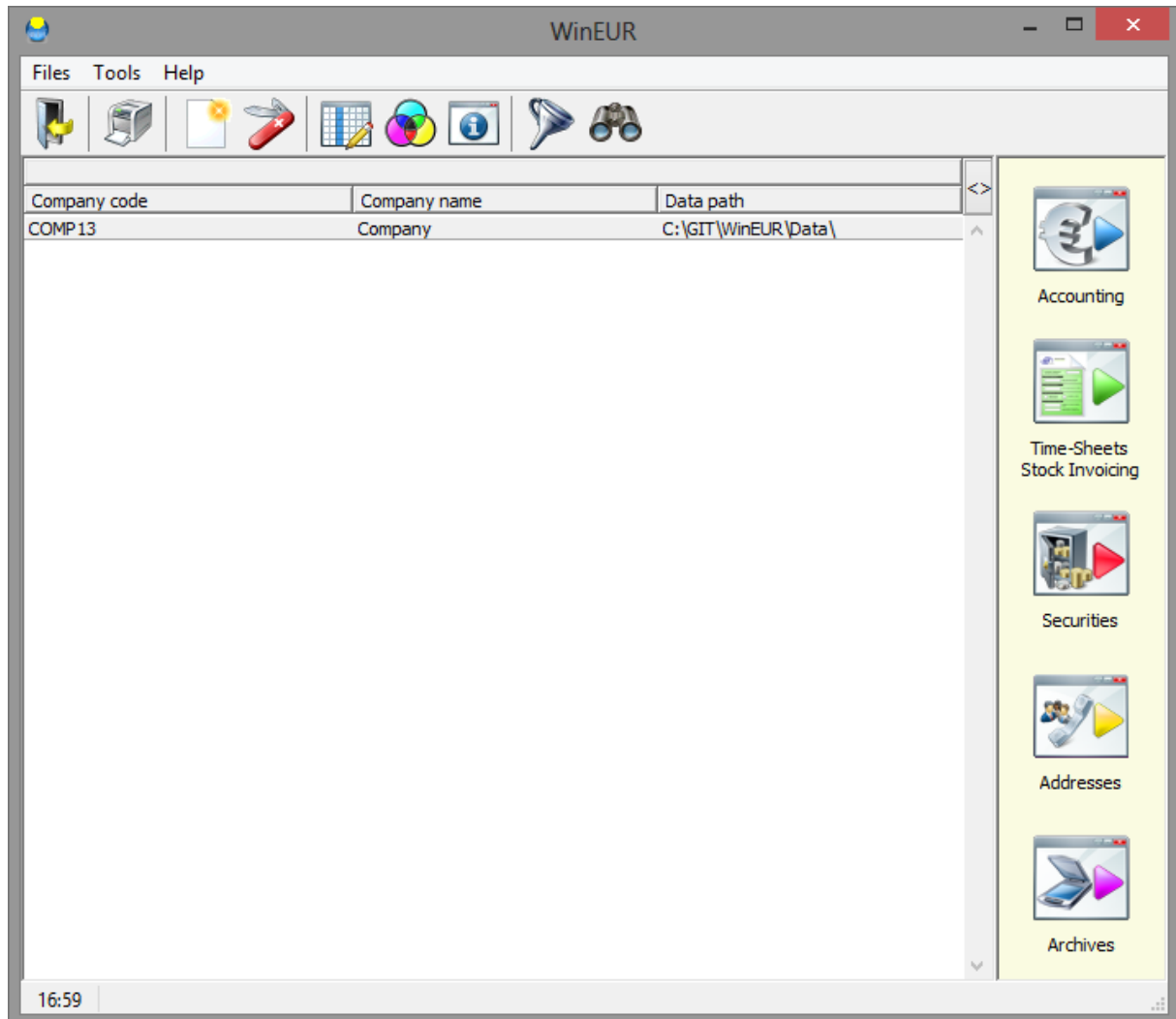
The program comes with a sample company. To install the sample company check the appropriate option and click on "Next".

If you do not wish to install the sample company, check the appropriate option and click on "Next".



The installation is now complete. Click on "End" to launch the program.

The following screen will be displayed :



The program is now installed and operational.

For installation issues or other questions, you can contact the support service by phone **+41 22 309 39 77** or by mail sav@git.ch.