



NEWS LETTER



BREAKING NEWS

Software Update WinEUR Summer 2021 version.

We are pleased to inform you about the new features and on-going improvements contained in the next update WinEUR Summer 2021.

How do I install my update?

With the help of the link which will allow you to download the latest version of your WinEUR software and which will be sent to you by email at the latest 2 weeks after you receive this newsletter.

If this email should not reach you, we invite you to contact our support services:

- by phone on +41 22 309 39 77
- or by email at sav@git.ch

Updates enrich the functionality of your software by adding new features and improvements.

We strongly encourage you to install the official update as soon as it is available and to follow the instructions (access link).

A breath of fresh air is blowing through the GIT S.A.'s offices. This fall, GIT S.A. is launching on the market, its new line of entirely web-based products: **Peppermint !**



Peppermint

What is Peppermint?

Peppermint is a fully web-based accounting software suite, developed by Frank Servais and his team, designed to be compatible with GIT SA's accounting software, in particular WinEUR.

The development of Peppermint started in October 2019 and the first **GL General Ledger** module, is in its final testing phase. It will be available at the end of August.

Key features:

Fully hosted on the cloud (Microsoft Azure, servers in Switzerland)

Based on the Microsoft SQL Server database

Developed in C # using the ASP.NET Core Entity Framework (Code First)

User interface and reports using Telerik components

Multi-tenant

Use of GIT authentication service for login (Microsoft, Google or local accounts)

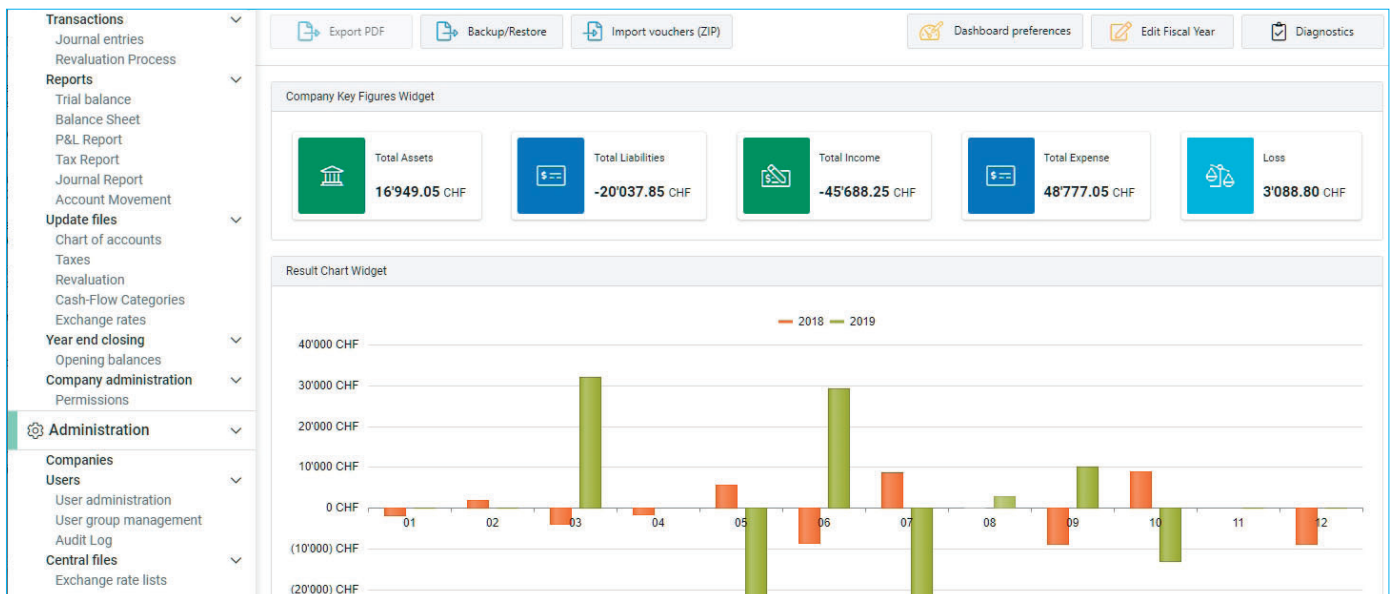


Peppermint



Simple and secure!

Peppermint can be used from any browser on PC, Mac or Linux. On a desktop computer, smartphone or tablet. **You don't need a local installation or Citrix-like software.**



Powerful and graphical!

Peppermint is based on the latest database standards and graphical tools such as configurable widgets.

Interview with its developer, Frank Servais.

What are the main advantages of Peppermint?

Cutting edge technology (Web, SQL, Cloud, methods and development tools).

Guaranteed performance and expandable in a few clicks
Accessible using a simple browser, PC, MAC, tablets, smartphones.

Many of WinEUR's previous limitations are removed (e.g. text and description lengths).



What about security?

100% of Peppermint uses the Microsoft Azure cloud.

Microsoft was selected by GIT because it is "too big to fail". The choice of servers is guaranteed in Switzerland, with a 2nd server also based in Switzerland.

Authentication is based on the latest technologies (including double authentication).

Applications are always up to date and data backup is ensured by GIT.

Backup/Restore functions are possible by the user without going through GIT support.

Is it easy to migrate a WinEUR GL accounting system to Peppermint?

Only a few minutes, with an export triggered in WinEUR GL, then an import in Peppermint, it includes all archived accounting documents (Pdf).

What is the development schedule for the other Peppermint modules?

GIT has never committed so many resources to a project as it has to Peppermint. We are aware of the critical need for other Peppermint modules so that most of our customers can make the transition. The task is massive, but the challenge is being met!

We are in the midst of developing the Analytics module, scheduled for the last quarter of 2021. The Third Party module will follow, in stages, with a target of the first half of 2022 for the basic functionalities, those used by the majority of our customers.

As our customers gradually migrate, we will be able to increase Peppermint resources and accelerate the development speed of other GIT modules and products.





The **48** IMPROVEMENTS & NEW PRODUCTS in the summer 2021 update

GENERAL

- WinEUR, list of companies, addition on the right mouse button of a menu to refresh the list of companies (when the F5 key is not accessible) and automatically refresh the list on a regular basis.

GENERAL LEDGER

- Journal report, an additional column for Currency of invariant third parties.
- Import of entries with choice of columns, addition of two columns:
 - Amounts in other currencies
 - Other currencies.If both columns are filled in, the amounts in other currencies will be converted into the reference currency for the current entry line. The possible rounding difference of the entry will be entered on the last line.
- Management of the new date format of the AFC currency file (transition from YYYY-MM-DD to DD.MM.YYYY).
- XML import of entries, addition of an option to not process zero entries (instead of putting them in error).
- Import of entries with choice of columns, addition of a new column (VAT broken down) to generate VAT when importing with choice of columns.
- Posting of debit and credit advices, when a pdf advice is the same for several notices, copy it to the posting archive as many times as there are postings generated from the notices sharing the document.

CAPITAL

- Added depreciation rate column to fixed asset column reports.
- XML import, added option of importing asset balances.



- In the list of payment proposals, addition of a total column and another column or not. This allows you to see the total of a payment proposal even if it is posted.
- Format editors, make it possible to point a QR-Invoice field to an amount in the print format.
- Development of a new payment method for Paypal.
- Column reports on third parties, addition of a column country code of the CRM (to find the address, the CRM link of the third party must be filled in).
- Print formats, ISR-QR field, addition of the possibility to have the whole amount and the decimal and the decimal part to be able to manage ISR on a total.
- Entering entries from an ISR, if no type 1 payment method for paying an ISR exists, warn the user and offer to create one.
- Development of the MINT import, allowing the creation of customers, account for customer invoices and receipts as well as expenses entered in the MINT application.
- Entering an invoice in the invoice register, integrating the possibility of entering an invoice from a QR-Code.
- Printing of QR-bills at zero, addition of a delimited zone to write an amount manually.
- Change a third party's control account, add a confirmation request the user that they will no longer be able to transfer balances from the previous year. the previous year.
- MINT import, added option to make analytical mappings for the import of invoices and the import of expenses.
- Development of a new functionality to analyze in excel the expenses related to each each cash transaction.
- Export in excel of the movement of the selected liquidity account with display on the left of each entry line of the counterparty accounts with the account name. account. If the counterparty account is a third party account (payment or collection of an of an invoice), you may go back to the accounting of the invoice to find the counterparty expense accounts.
- Utility to convert supplier invoices into customer invoices from the list of third parties.
- Proposal of payments with archiving in M-Files, new option allowing the feed of certain properties of selected invoices for payment:
 - Number of payment options
 - Expiry date
 - Date of payment.
- Improvement of e-invoice subscription to find the third party in relation to the reference number of the cashed invoice (for direct subscriptions).
- Subscription for e-invoices, improve the interface to display only unprocessed items.
- Entry of an entry from an invoice or from a third party, addition of the entry of a analysis reference for the expense line if option active in the company and account with entry of the journal analysis reference.
- Addition of a third-party holding field in the column report on the journal.

TITLES

- Balance of entry of securities in foreign currencies, propose the exchange rate according to the definition of the securities control account (closing, standard, current) and not systematically the closing rate.

CRM

- Addition of the mobile phone field of the contact in the variables of the text messages sent by e-mail.

STOCK

- Activate the floating margin in the texts of memo type articles.
- Transfer to accounting of supplier invoices with Flox approval before payment is activate, mount the supplier invoices in the invoice register to be able to send them to Flox for approval.
- Improved import of TXT file transactions by adding the Project Description column and converting the project code.
- Addition in the diagnosis of the control if the places of stocks defined in the articles still exist.
- Addition of the option 'Change status: Down payment cleared' in archived transactions.

ANALYTIC

- Input balance of the analytical accounts, addition of the total of the analytical accounts.
- The analytical accounts required for the revaluation can be linked to a GL account and used when posting the revaluation.
- XML export, added export of analytical dimensions

BUDGETS

- New function to export and import lines from one budget report to another.

EBANKING

- E-banking ASP, addition of the option to download PDF files and manage the uploading of these exchange SaaS in the program of debit and credit advices on the ASP, adding the on the ASP.

INVOICING

- Detailed management of the addresses in the import of transactions in TXT files.
- Added billing and delivery name and address fields on line 1 in the import of TXT file transactions.
- Added billing and delivery address fields on line 6 and 7 in the import of TXT file transactions.
- Addition in the transaction header of the choice of the VAT accounting currency:
 - VAT in CHF (2 entries)
 - VAT in <OCCY> (1 entry).
- Addition in the parameters of the list of archived transactions, the selection of the settlement condition 'Standard' or 'Multiple maturities' in the list of archived transactions.
- Column reports on transactions, addition of e-mail 2 and e-mail 3 fields of the third party.
- Always make the 'Create archive (pdf)' option available in the transaction printing window (regardless of the settings).

FLOX

- Flox with imputation, new option to be able to impute on asset and liability accounts liabilities (excluding VAT accounts set up in the tax codes). Display of the document in dual screen, new option to display the flox detail when the flox module is active.





IT Services
www.git-it.ch



IT management and maintenance are important on a daily basis. Don't worry about your IT, GIT-IT is there for that!
You have a question or a problem? Call us ! Our technicians are at your disposal to help you ! +41 22 566 42 00 info@git-it.ch

The entire GIT S.A. team thank you for your confidence.
They look forward to seeing you in September.

**Do you have a question? Need more information?
Contact our client services!**

Vicente Gonzalez - Jean-Richard Sala

Tél. +41 22 309 39 88
ventes@git.ch

Credit photos : FOTOLIA